



environment intelligence

Founded in 2011 and committed to providing the best possible Energy and Environment monitoring and intelligence technology to our customers.



- ✓ Headquartered in Gurgaon
- ✓ Technology center in Noida



- ✓ 80+ Customers
- ✓ 50+ Employees



- ✓ Energy Intelligence
- ✓ Environment Intelligence



- ✓ 8000+ devices being monitored online.



- ✓ India
- ✓ Africa
- ✓ GCC



- ✓ Handling Terabytes of Data
- ✓ ISO 9001 & ISO 27001
- ✓ Red herring Global Top 100

We create software that makes energy and environment data simple to acquire, understand and act upon.

IMPROVE SUSTAINABILITY

OUR MISSION

Improve sustainability through better energy and environment monitoring and management.

WE NEVER REST

PRODUCT PHILOSOPHY

Just don't work, work to make a difference. We work tirelessly to build great products that make our customers and partners win.

YOU WIN WE WIN

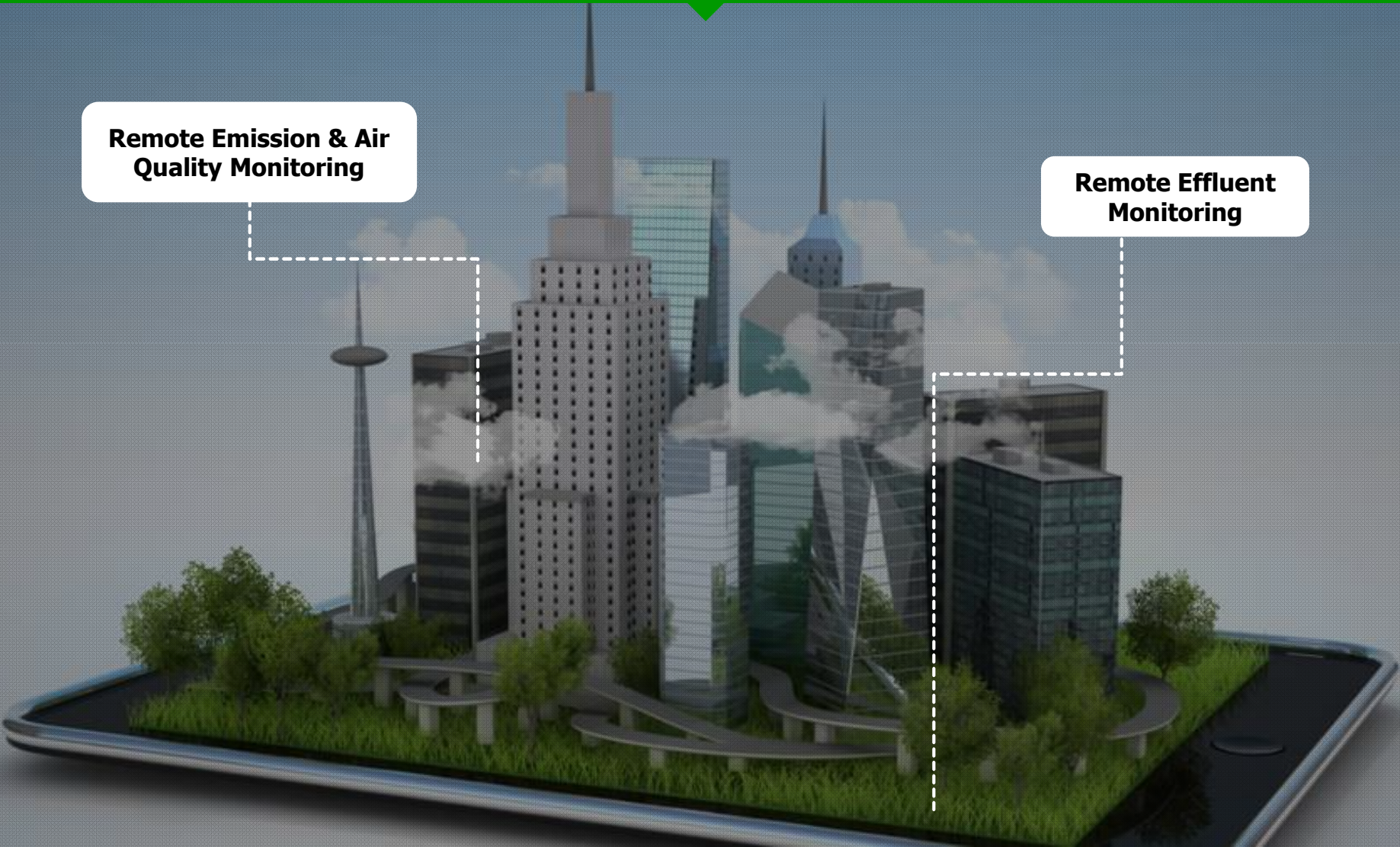
CUSTOMER PHILOSOPHY

Our customers are the purpose of our existence. Help them win so that we can win.

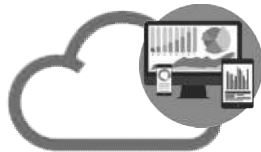
Software for better Environment Monitoring & Management

Remote Emission & Air Quality Monitoring

Remote Effluent Monitoring



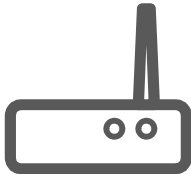
Solutions to energy and environment challenges begin with LogicLadder technologies.



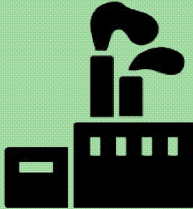
ENVIRONMENT
CLOUD PLATFORM



IoT SYSTEM
INTEGRATION



SENSORS & IoT CLOUD
CONNECTORS



ENVIRONEMNT
INTELLIGENCE

SUSTANABILITY CLOUD



▶ ENVIROMENT INTELLIGENCE

CLEAR INSIGHTS FOR CLEANER ENVIRONMENT

A revolutionary software for clear insight into your environment data, so that you can be empowered to work for a cleaner environment.



IMPROVING COMPLIANCE

Improving environment compliance as per CPCB.



Reliance uses EnviroLogicIQ for real time monitoring and management of wastewater, emissions and air quality. The platform is also used to meet CPCB compliance on online monitoring and reporting.

SCALABLE & SECURE

EnviroLogicIQ is provided as a cloud hosted solution that comes with high scalability and security out of the box at a fraction of cost.

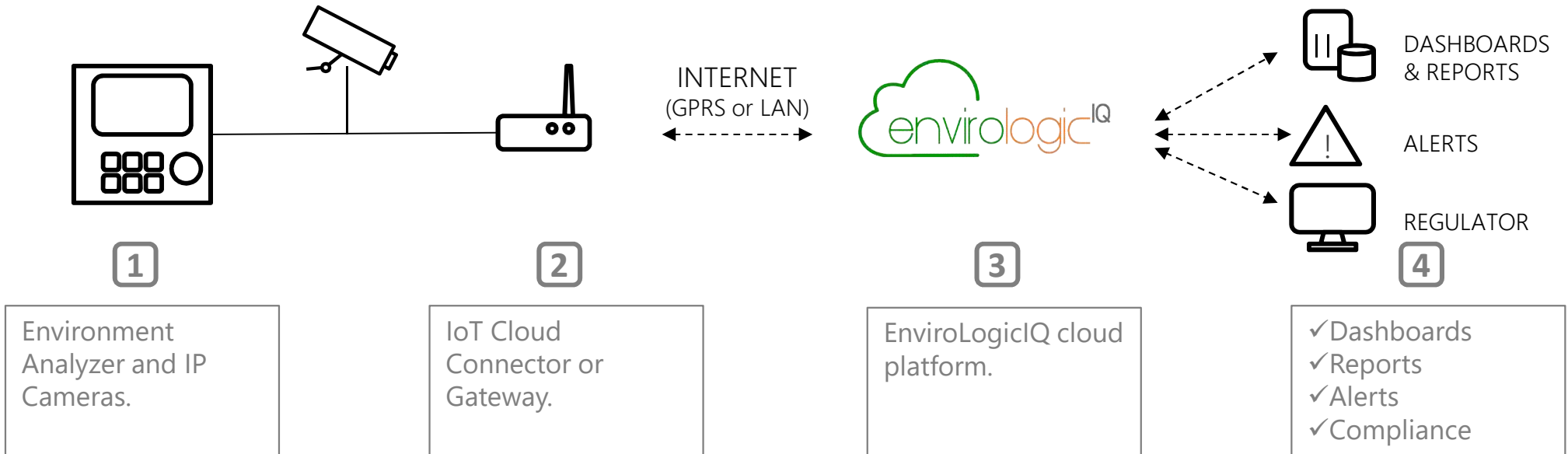
ANY ANALYZER

EnviroLogicIQ supports almost every air, water and emission monitoring environment analyzer in the world.

CLEAR INSIGHTS

Data analysis for valuable insights into your environment data. Reporting to meet your compliance and MIS requirements.

How it works?



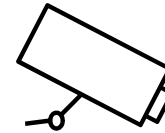


A REVOLUTIONARY ENVIRONMENT PLATFORM

The next generation software for insight into your environment data. Powered by real time IoT technology for communication and Big Data for data storage and analytics.



Big Data storage to monitor at any scale.



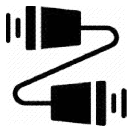
Real time camera streaming and recording on the cloud.



Reports, Dashboards and export functionality.



Real time alert over email and SMS.



Two way IoT communication



Data verification algorithms.



Change request and workflow management.



Integration with Map

Leading companies use EnviroLogicIQ to save energy and environment.

Accreditations & Certifications

 <p>MEMBER CII Confederation of Indian Industry</p>	 <p>CCL ***** ISO 27001:2013</p>	 <p>JAS-ANZ C ISO 9001:2008</p>
 <p>NASSCOM MEMBER</p>	 <p>RED HERRING WINNER 100 GLOBAL</p>	 <p>RED HERRING 100 WINNER ASIA</p>



LogicLadder Technologies Private Limited
204, Unitech Arcadia, Sector 49,
South City II, Gurgaon - 122018
T : +91.11.30051567 | F : +91.11.30051567

THANK YOU

 info@logicladder.com

 [#LogicLadder](https://twitter.com/LogicLadder)